

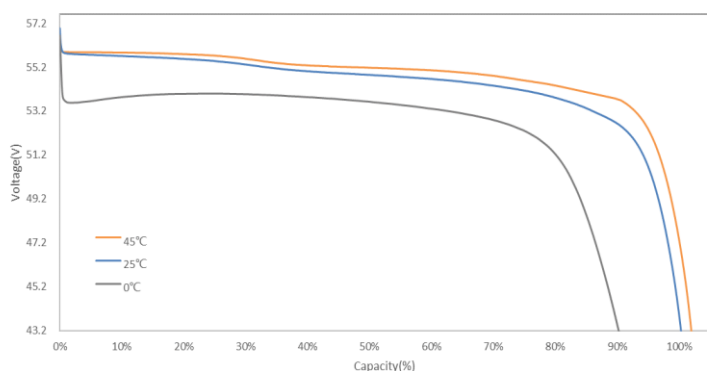
Discharge data with constant current/25°C

Time/h \ Current/A	0.1C	0.2C	0.3C	0.4C	0.5C
End voltage /V	Hours				
49.6 V	9.43	4.60	3.05	2.30	1.67
48.0 V	9.77	4.78	3.20	2.33	1.82
46.4V	10.00	4.88	3.28	2.43	1.93
44.8 V	10.18	5.00	3.35	2.46	1.98
43.2 V	10.30	5.15	3.40	2.54	2.00

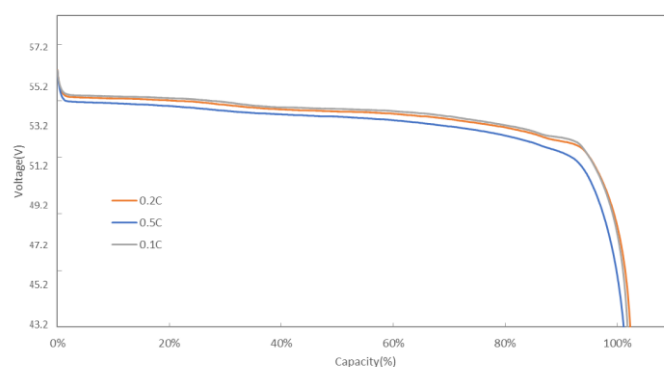
Discharge data with constant power/25°C

Time/h \ Power/W	960	1920	2880	3840	4600
End voltage /V	Hours				
49.6 V	9.42	4.59	3.04	2.29	1.70
48.0 V	9.75	4.76	3.18	2.31	1.83
46.4V	9.97	4.85	3.25	2.40	1.92
44.8 V	10.14	4.96	3.31	2.42	1.97
43.2 V	10.26	5.11	3.36	2.50	1.99

Discharge Curves



Voltage vs. Discharge Capacity Percentage under different temperature



Voltage vs. Discharge Capacity Percentage with different constant current rate